

A SMART TOOL FOR SUSTAINABILITY DATA MANAGEMENT

REPORT, ANALYSE, COMMUNICATE AND STORE DATA

CEMAsys is a cloud based sustainability reporting tool where you can collect, measure, store and manage all corporate sustainability data in one single platform. The tool contains different modules for reporting aspects on carbon footprint, environmental, health/safety, deviation, CSR and Supply Chain.

CEMAsys helps our clients collect and report their corporate impacts, sustainability and compliance initiatives, in an effective and secure way. It handles data reporting for over 250 organisations, of any size and hierarchical complexity and in any sector, in a timely and consistent manner.



Supply Chain
Control



Document
Library



Carbon
Footprint



CSR &
Environment



HSE &
Deviation Log



The system allows easy web access to your platform, and will allow you to download and store historical data ensuring corporate continuity. Organisations looking to scale up from spreadsheets to a professional sustainability reporting tool can through CEMAsys report corporate data in accordance to their own preferences. Our clients have found that CEMAsys has significantly increased the efficiency of managing their corporate impacts.

*CDP accredited consultancy
partner since 2010.*



For more information, please contact:

Frithjof Grønlien | Senior Advisor | frithjof@co2focus.com | (+47)905 77 355
Kjetil Selmer-Olsen | Senior Advisor | kjetil@co2focus.com | (+47)930 05 020

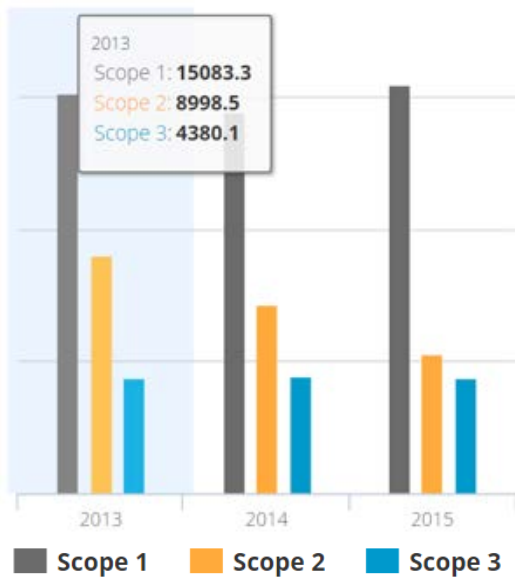
www.cemasys.com

CO2focus AS | Hegdehaugsveien 31 Oslo, Norway Org.no 890 999 832

CARBON FOOTPRINT MODULE

REPORT DATA AND MANAGE HISTORICAL EMISSIONS

CEMA_{sys} Carbon Footprint module is a state-of-the-art corporate carbon management tool. A clear picture of your carbon footprint enables you to make detailed steps to cut emissions and save costs.

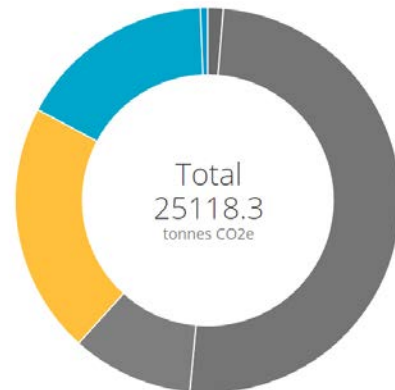
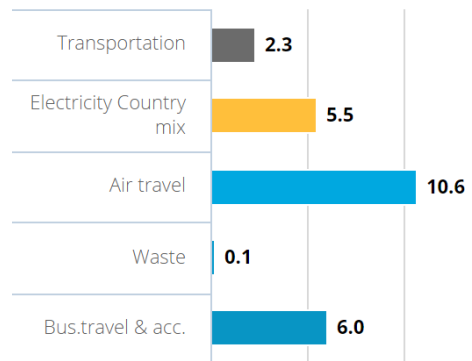


45.6
tCO₂e per FTE

162
FTE

3.7
tCO₂e per Revenue

1999
Revenue



KEY FEATURES

- ✓ CEMA_{sys} is designed according to the latest GHG Protocol methodology.
- ✓ Tailored for climate reporting schemes such as CDP, GRI, RobecoSam, Dow Jones.
- ✓ Worldwide emission factor database, updated and maintained
- ✓ Recognized sources as DEFRA, IEA, IPCC and many more.
- ✓ Upload documents to create an audit trail for external verification
- ✓ Import historical data – secure continuity
- ✓ Flexible data reporting; login, automatic email links and large data import
- ✓ Hierarchical structure setup, with unlimited number of locations, countries and users
- ✓ HelpDesk with dedicated and experienced sustainability advisors
- ✓ Large selection of graphics, tables/Excel export and PDF downloads available

CSR & ENVIRONMENT MODULE

MANAGE CORPORATE NON-FINANCIAL INFORMATION

CEMAsys is tailored for reporting CSR and environmental related data and indicators, e.g. water, emissions, materials and waste.

The module is well integrated with the most common CSR and environmental reporting requirements, such as GRI (Global Reporting Initiative), UN Global Compact and environmental management systems (ISO-14001 & EMAS).



Health & Safety Environment General CSR indicators

Health & Safety

Available ending this: [dropdown] [Save] [Cancel]

Unit: [dropdown] Data Input: [dropdown]

User authority at parent level: [dropdown] [Save] [Cancel]

Environment

GRI 401 Materials used by weight or volume

Name of material: [dropdown] Unit: [dropdown] Data Input: [dropdown] Number of material: [dropdown] Source of material: [dropdown] Date used: [dropdown]

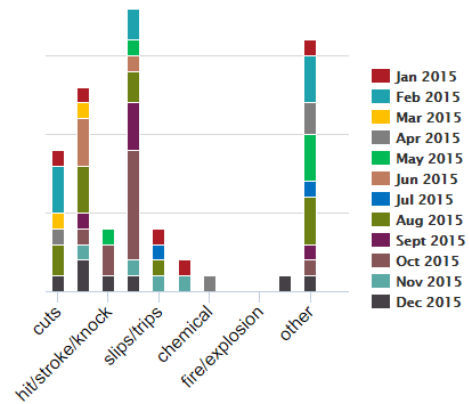
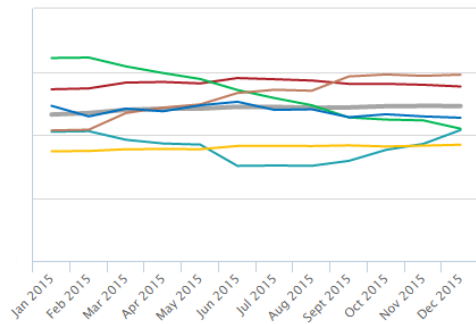
GRI 402 Emissions to air - CO2 (Climate-Dependent Substances)

Field name: [dropdown] Unit: [dropdown] Data Input: [dropdown] Further information about CO2: [dropdown] Report number by methodology: [dropdown]

Other

Alerts/notifications

Field definition: [dropdown] Unit: [dropdown] Data Input: [dropdown] Comments: [text area]



KEY FEATURES

- ✓ Predefined GRI indicators for environmental data including materials, water, emissions and waste
- ✓ Includes all relevant CSR reporting aspects
- ✓ Free-text fields for designing your own reporting formats
- ✓ Predefined HSE indicators including customized HSE PDF reports
- ✓ Upload documents to create an audit trail for external verification
- ✓ Flexible data reporting; login, automatic email links and large data import
- ✓ Import historical data – secure continuity
- ✓ Hierarchical structure setup, with unlimited number of locations, countries and users
- ✓ HelpDesk with dedicated and experienced sustainability advisors
- ✓ Large selection of graphics, tables/Excel export and PDF downloads available

HSE & DEVIATION MODULE

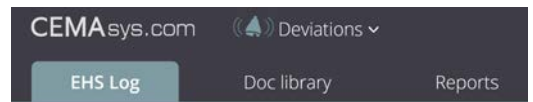
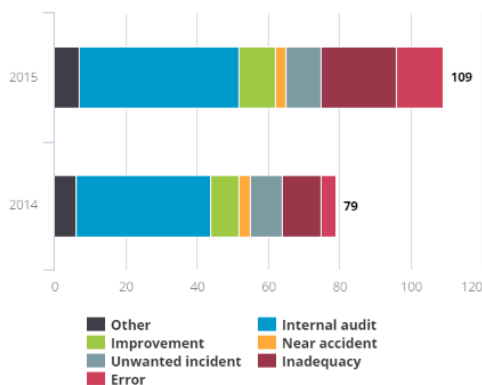
RECORD AND MANAGE YOUR DEVIATION DATA

CEMAsys helps you to capture, analyse and report all the HSE (health, safety, environment) metrics that are important to your organization.

HSE Deviation Log is about meeting statutory requirements, preventing future incidents and improving safety. Our Deviation Log provides a single, secure and auditable database in which to record all your HSE incidents. You can assign corrective actions, analyse underlying causes, report on incident rates and maintain an accurate digital record of policy documents.



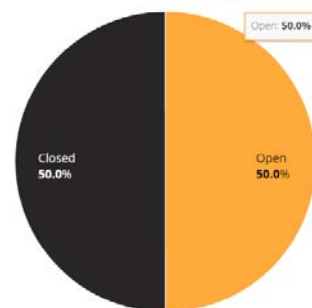
NUMBER OF DEVIATION AND TYPE



Deviations & improvements log

Date	Subject	Category
09.08.2016	Avvik avfallsortering	Waste
26.07.2016	Hodeskade ansatt	Health & Safety
14.07.2016	avvik	Energy/co2 emissions

Deviations administration (year to date)



KEY FEATURES

- ✓ The CEMAsys Deviation module helps you manage your HSE Deviation data and meet legislative and company-specific requirements
- ✓ Consistent and timely information stored in a central HSE database
- ✓ Log incidents, send notifications, define roles and assign responsibilities
- ✓ View all registered incidents in the Deviations Log.
- ✓ Make it easier to profile risks and identify improvement opportunities
- ✓ Our HSE tools can also be integrated with your existing operational systems
- ✓ View statistics and comprehensive graphics on your company Dashboard, and export picture-files of graphs for your own use.

SUPPLY CHAIN@ MODULE

MONITOR AND COMMUNICATE WITH YOUR SUPPLY CHAIN IN AN EFFICIENT MANNER

The CEMAsys Supply Chain module allows you to assess, audit and manage suppliers in an efficient, structured way, enabling you to identify CSR risks and drive performance. This helps you to form a clear view of supplier compliance and provides you with tools to administrate your supplier's self-assessments and manage responses. Your suppliers can easily respond to your supply chain questionnaires.



Respondents 29

Search Import Manage categories

Name	Type	Category	Contacts
Risa ACo	Subsidiary		1
Risa ACo	Subsidiary	CO2focus AS	1
Risa ACo	Subsidiary	CO2focus AS / New node	1
Green ACo	Subsidiary		1

Active surveys 1

+ New survey

Active: CO2focus sustainability textile survey 2017
Due date: 23-09-2016
This is a survey aimed at suppliers in the textile industry.

Draft:

Completed:

Cancelled:

Progress: 89% Opened, 71% Started, 21% Finished

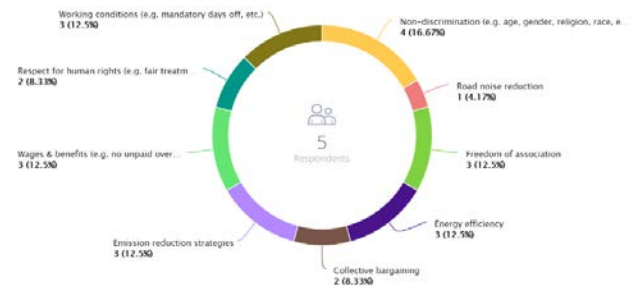
Questions

Filter by Type

Name	Type	GRI CODE	Surveys	Respondents	Answered	Statistics
Does your company have a wastewater treatment facility?	MC	EN22	1	6	1	
As our supplier, have your company signed our Code of conduct?	MC	-	1	6	1	
Did you sign our code of conduct?	MC	-	1	6	1	
Is sustainability a factor in developing new products for your organization?	MC	-	1	6	1	



13. For which of the following social Issues does your company have a policy? - (2)



KEY FEATURES

- ✓ Easily create surveys and ask for CSR related information.
- ✓ Send survey by email to unlimited number of respondents
- ✓ Library of predefined best practice questions based on the GRI standard
- ✓ Work together with our experts to create a relevant survey for your organization.
- ✓ Our advisors can organize and run the survey for you.
- ✓ Create new surveys or copy existing ones, send or save as draft
- ✓ Comprehensive graphical solutions and statistics for analysis of survey responses
- ✓ Export statistics and graphs to PDF/picture format


DOCUMENT LIBRARY

A SECURE FILE-SHARING AND STORAGE SOLUTION

Use the CEMAsys Document Library to upload documents in order to create an audit trail or simply to remember your history. The CEMAsys Document Library is a secure file-sharing and storage solution within CSR and HSE management. Cloud storage makes all your data readily accessible and simplifies the process of quality assurance. You can make your document library available to third parties in connection with audits and verification of data.



CEMA_{sys} guidelines



File upload
Drag your files here or [click here to browse](#)
Supported file formats: docx, doc, pdf, xls,xlsx
Max file size 11MB

AAB Test Company 2011

- Source Documents 6
- Guidelines 2
- Company specific ▼
- HSE - CSR 11

2011

2016

2015

2014

2013

2012

2011

2010

CEMA_{sys}.com HSE - CSR ▼

Data entry Doc library Reports

AAB Test Company 2015

- Source Documents 6
- Guidelines 2
- Company specific ▼
- HSE - CSR 11

CEMA _{sys} HSE - CSR				
Name	Customer	Top unit name	Unit name	
AAB-TestCompanyPDF-2015.pdf	AAB-Test Company	Add topunits	First	
AAB-TestCompanyDOC-2015.doc	AAB-Test Company	Add topunits	First	
AAB-TestCompanyDOCK-2015.docx	AAB-Test Company	Add topunits	First	
AAB-TestCompanyXLS-2015.xls	AAB-Test Company	Add topunits	First	
AAB-TestCompanyDOCK-2015.docx	AAB-Test Company	Add topunits	First	
AAB-TestCompanyXLS-2015.xls	AAB-Test Company	Add topunits	First	
AAB-TestCompanyXLSX-2015.xlsx	AAB-Test Company	Add topunits	First	
HSE-AAB-TestCompany-2015.xls	AAB-Test Company	Add topunits	First	
HSE-CarbonAAB-TestCompanyXLS-2015.xls	AAB-Test Company	Add topunits	First	

KEY FEATURES

- ✓ A secure file-sharing and storage solution within CSR and HSE management
- ✓ Make documents available to third parties in connection with audits and verification of data
- ✓ Import large amounts of data into CEMAsys from other systems with our import function
- ✓ Ensure continuity in your work
- ✓ Give new employees fast access to files and folders, and take care of outgoing employee's work using the account transfer

SCIENCE-BASED TARGET

CO2focus has experienced and skilled advisors who can calculate how your company should reduce emissions according to the science-based methodologies.

Companies globally are raising their ambitions around target-setting to ensure their long-term sustainability and profitability, driving bolder business action.

Science-based targets allow companies to create their own GHG emission scenarios in line with their “fair share” of the global emission budget.

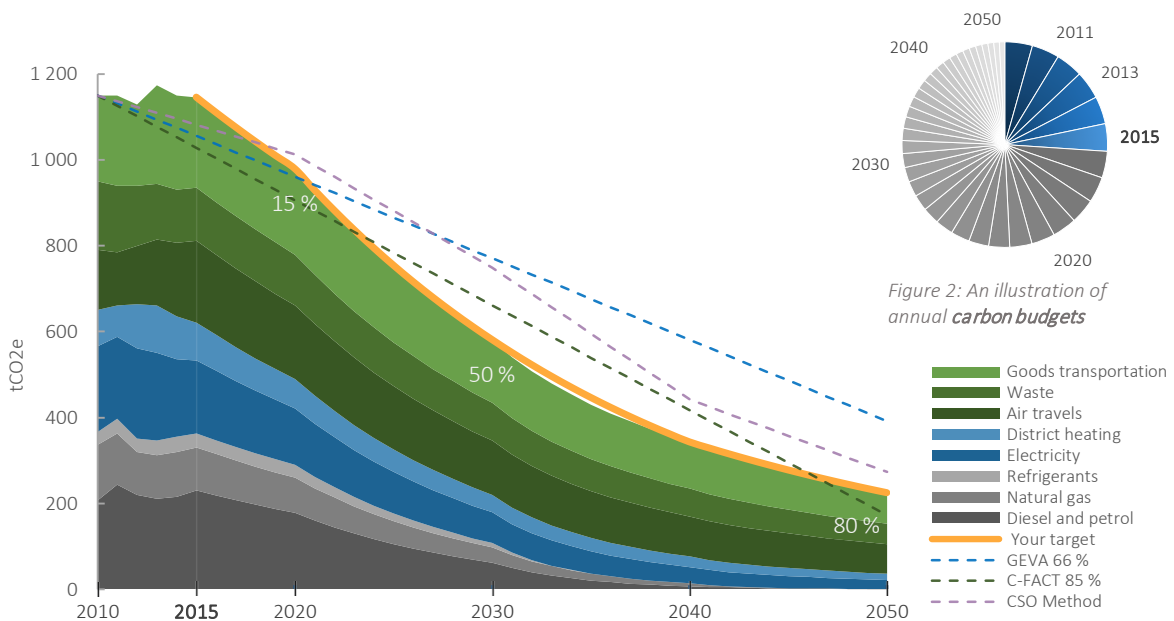


Figure 1 : An example of a company's past emissions (2010-2015) and a path for future emissions (2015-2050), per emission source (coloured fields). The yellow line represents the path for total emissions, with percentage reductions (white numbers) at 2020 (short-term target), 2030 (mid-term target) and 2050 (long-term target), with 2010 as a base year. Dashed lines represent the reductions required by different methodologies to reach the 2-degree target. Note that the science is not exact in this field.

KEY FACTS & BENEFITS

- ✓ The Science-Based Targets Initiative is a joint effort between CDP, UN Global Compact, WWF and World Resources Institute.
- ✓ A corporate emission reduction target approved by the Science-Based Target Initiative gives additional points in the CDP questionnaire.
- ✓ CO2focus provides a quick science-based target analysis, where different methodologies are compared.
- ✓ Based on a company's GHG inventory and level of ambition, we help setting medium- and long term targets, focusing on absolute or intensity reductions.
- ✓ Each emission source is examined to explore the most economically and environmentally sound mitigation measures.

Set your science-based emissions reduction target now!

CSR SUPPORT

Our team of sustainability experts helps you build competitive advantages, reduce CSR risks and build a positive brand image through clear, correct, and meaningful sustainability reporting

CARBON FOOTPRINT: We offer a carbon footprint reporting service, performed in accordance with ISO 14064-3:2006, the Greenhouse Gas Protocol and Corporate Accounting and Reporting Standard (published by World Resources Institute and World Business Council for Sustainable Development).

We provide guidance for information input, reporting structure and organization, methodology and quality.

CDP REPORTING: We offer a CDP (Carbon Disclosure Project) reporting service. Since 2008 we have encouraged and assisted clients reporting to CDP, with an exceptional track record. CO2focus is a CDP Silver Partner accredited partner.



GRI REPORTING: We offer a GRI (Global Reporting Initiative) service and similar types of CSR reporting (e.g. Dow Jones, RobecoSam). Our team of advisors is also GRI certified consultants (G4 reporting guidelines). We will support you in your process of sustainability reporting e.g. defining your material aspects and stakeholders' involvement.

SCIENCE-BASED TARGET: We also offer a specific SBT (Science Based Target) service. Science-based targets allow companies to create their own GHG emission scenarios in line with their "fair share" of the global emission budget. Our team helps you calculate and demonstrate how your company should reduce emissions according to science-based methodologies.

